

# West Bank Closures - Tulkarm

April 2007

TULKARM CLOSURES	
Checkpoints	4
Partial Checkpoints	0
Roadblocks	2
Road Gates	2
Earth Mounds	10
Earth Walls	800 m - 2
Trenches	0
Road Barriers	1,800 m - 2
<b>TOTAL</b>	<b>22</b>

**Access**

**Closed and Restricted Areas**

- Israeli military base (Access is prohibited)
- Israeli closed military area (Access is prohibited)
- Existing and projected 'closed areas' behind the Barrier (Access is limited to permit holders)

**Israeli Settlements**

- Outpost
- Land cultivated by settlers
- Settlement municipal area
- Settlement built-up and outer limit

**Palestinian Areas**

- Built-up

**Roads**

- Prohibited or Restricted Palestinian vehicle use
- Main road
- Other Road

**Oslo Agreement**

- Area A<sup>1</sup>
- Area B<sup>2</sup>
- Special Case (KZ)<sup>3</sup>
- Intended Nature Reserve
- Area C<sup>4</sup>

**Physical Closures**

- Checkpoint
- Partial Checkpoint
- Road Gate
- Observation Tower
- Earthmound
- Roadblock
- Tunnel
- Planned Tunnel
- Earth Wall
- Road Barrier
- Trench

**West Bank Barrier**

- Constructed
- Under Construction
- Planned Route
- Agricultural Gate<sup>1</sup>
- Military Gate<sup>1</sup>

<sup>1</sup>Forty-five of the eighty-four Barrier gates are open to Palestinians with appropriate permits.  
<sup>2</sup>Planned Barrier - path based on Israeli Government map, published April 30 2006 and IDF land seizure orders. (Ministry of Defence - Seam Zone Authority)  
<sup>3</sup>Constructed Barrier - path extracted from satellite imagery and verified by field survey as of April 2007.

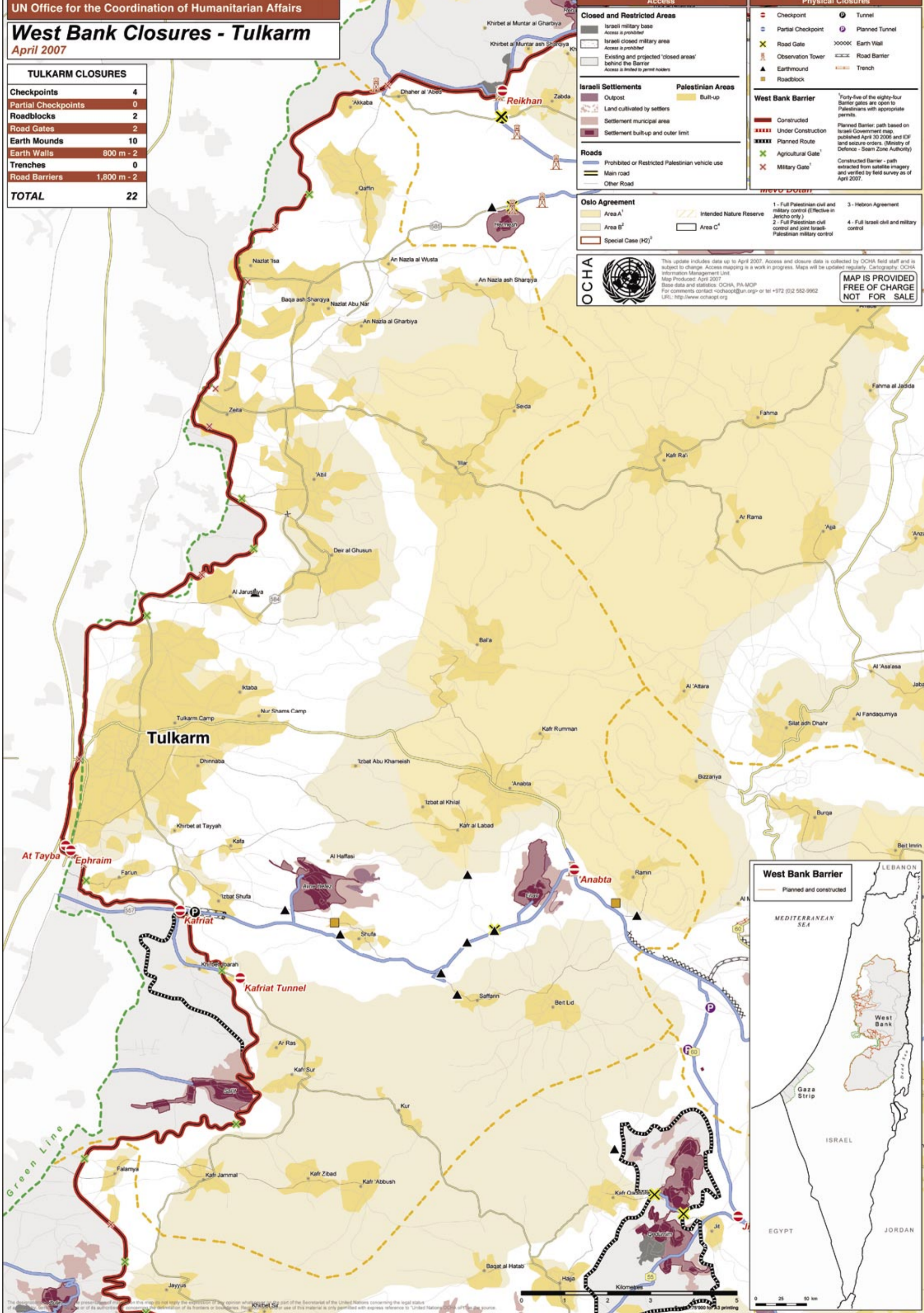
**Oslo Agreement**

- 1 - Full Palestinian civil and military control (Effective in Jericho only)
- 2 - Full Palestinian civil control and joint Israeli-Palestinian military control
- 3 - Hebron Agreement
- 4 - Full Israeli civil and military control

OCHA

This update includes data up to April 2007. Access and closure data is collected by OCHA field staff and is subject to change. Access mapping is a work in progress. Maps will be updated regularly. Cartography: OCHA Information Management Unit.  
 Map Produced: April 2007  
 Base data and statistics: OCHA, PA-MOP  
 For comments contact ochaopt@un.org or tel +972 (0)2 582-9962  
 URL: <http://www.ochaopt.org>

**MAP IS PROVIDED FREE OF CHARGE NOT FOR SALE**



The distribution of this map is not intended to imply the expression of any opinion whatsoever on the part of the Secretariat of the United Nations concerning the legal status of any territory, the delimitation of its frontiers or boundaries. Reproduction of this material is only permitted with express reference to "United Nations Office of Humanitarian Affairs".