

UN Office for the Coordination of Humanitarian Affairs
West Bank Closures - Salfit
 April 2007

SALFIT CLOSURES

Checkpoints	3
Partial Checkpoints	0
Roadblocks	3
Road Gates	8
Earth Mounds	7
Trenches	0
Road Barriers	200 m - 1 7,400 m - 8
TOTAL	30

Physical Closures

- Checkpoint
- Partial Checkpoint
- Road Gate
- Observation Tower
- Earthmound
- Roadblock
- Trench
- Planned Tunnel
- Earth Wall
- Road Barrier

West Bank Barrier

- Constructed
- Under Construction
- Planned Route
- Agricultural Gate
- Military Gate

Access

- Israeli military base
- Access to perimeter
- Israeli closed military area
- Access to perimeter
- Existing and projected 'closed areas' behind the Barrier
- Access is limited to permit holders

Israeli Settlements

- Outpost
- Land cultivated by settlers
- Settlement municipal area
- Settlement built-up and outer limit

Roads

- Prohibited or Restricted Palestinian vehicle use
- Main road
- Other Road

Oslo Agreement

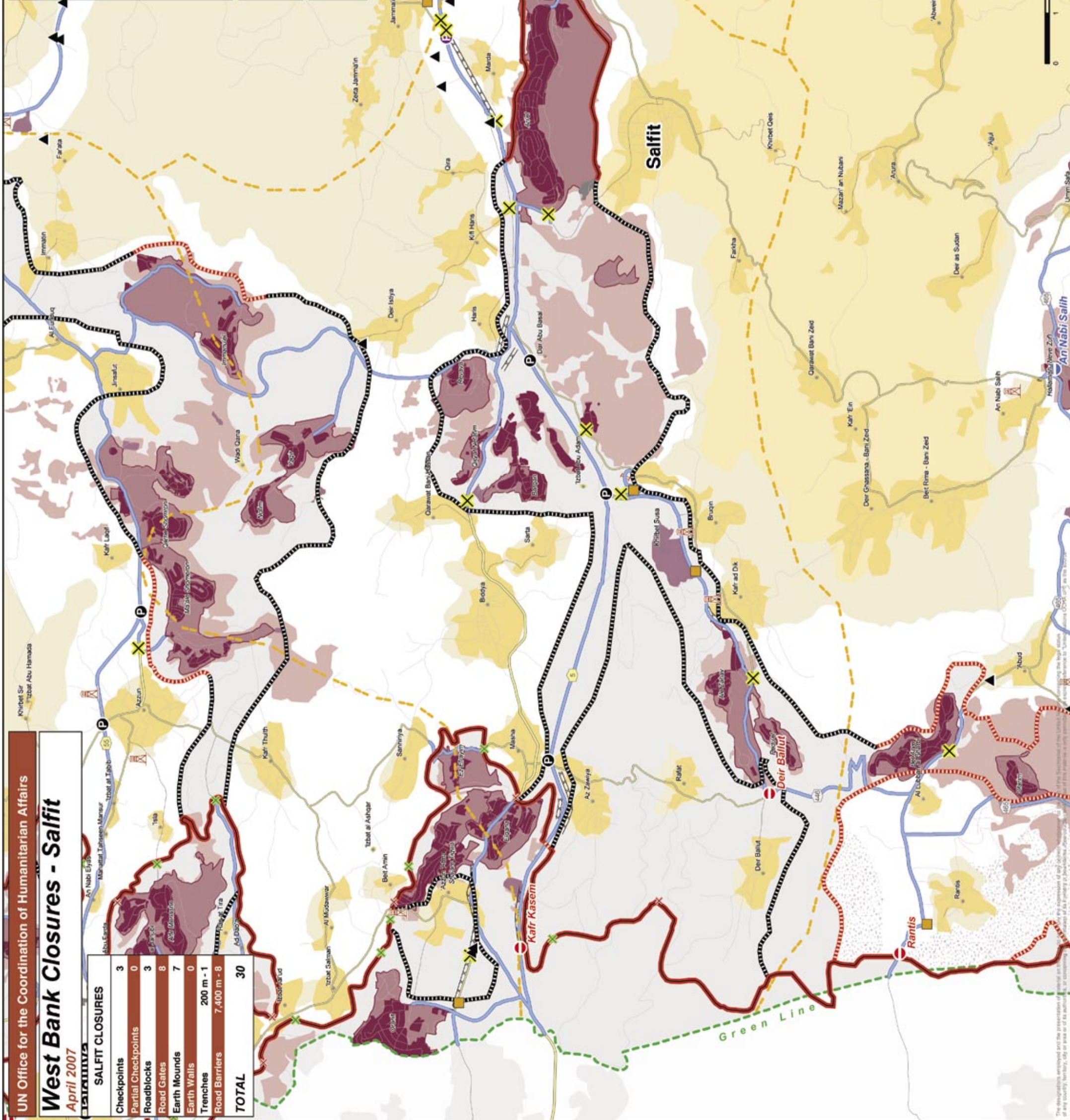
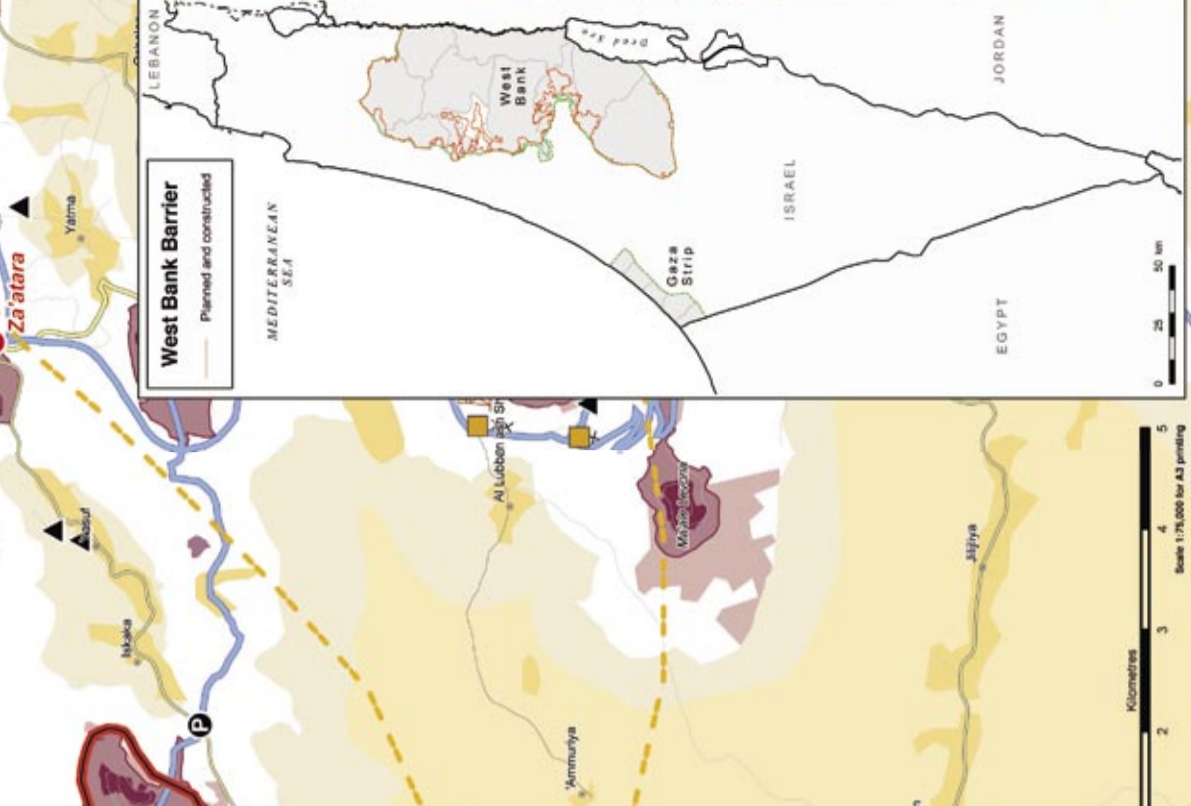
- Area A
- Area B
- Area C
- Special Case (147)

West Bank Barrier

- Planned and constructed

MAP IS PROVIDED FREE OF CHARGE NOT FOR SALE

This update includes data up to April 2007. Access and closure data is collected by OCHA field staff and is subject to change. Access mapping is a work in progress. Maps will be updated regularly. Cartography: OCHA. Map Produced: April 2007. Base data and statistics: OCHA, PA-MOP. For comments contact: ochamap@un.org or +972 (0)2 592-1992. URL: <http://www.ochaopt.org>



Scale: 1:10,000 for A3 printing

0 1 2 3 4 5 Kilometres

0 25 50 100 metres

The designations employed and the presentation of the material in this map do not imply the endorsement of the United Nations of any particular country, territory, city or area or of its authorities, or the endorsement of OCHA as the sponsor of this map.