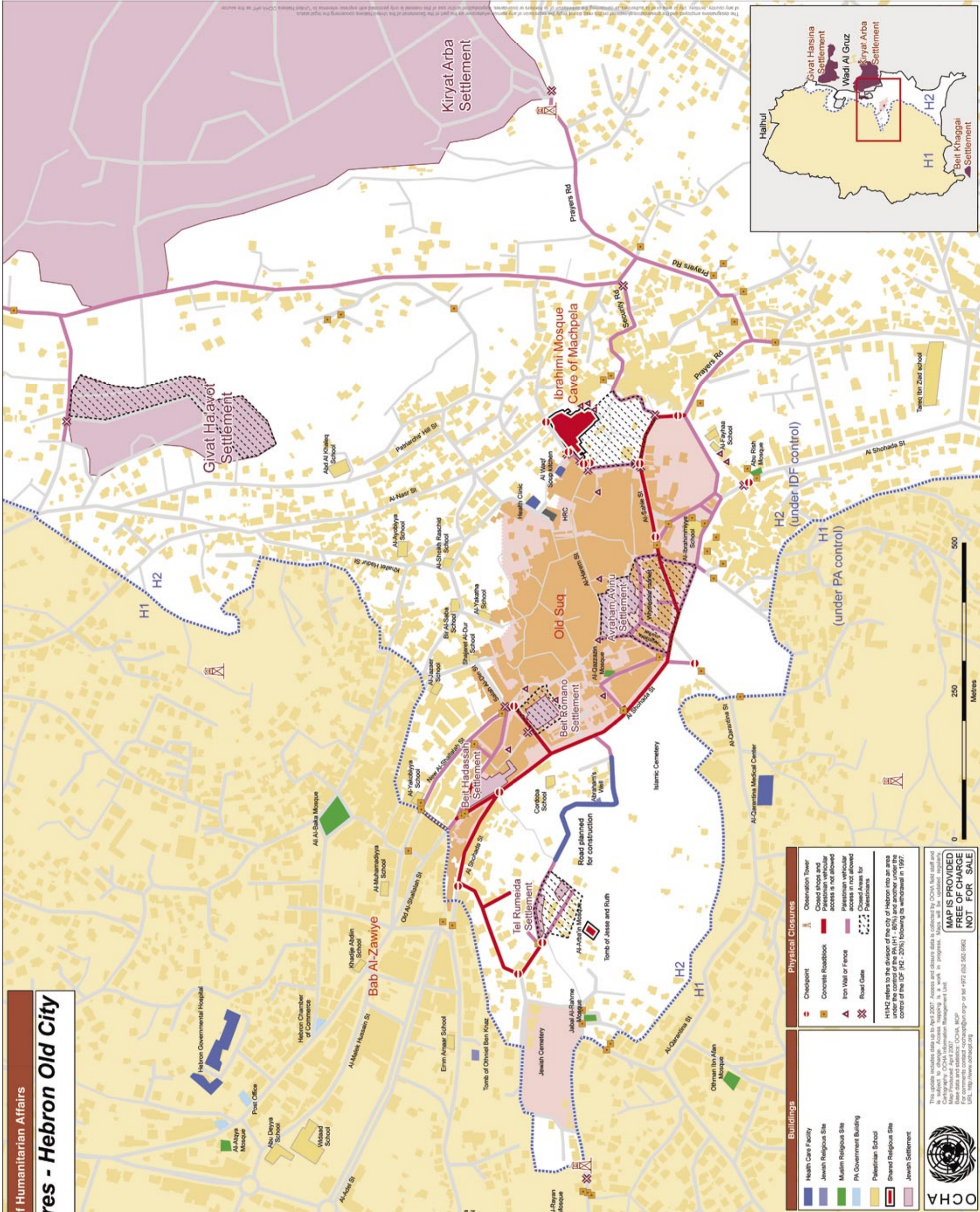


West Bank Closures - Hebron Old City

April 2007

HEBRON OLD CITY CLOSURES	
Checkpoints	14
Iron Walls and Fences	13
Roadblocks	44
Road Gates	13
Observation Towers	5
TOTAL	89



Buildings

- Health Care Facility
- Jewish Religious Site
- Muslim Religious Site
- PA Government Building
- Palestinian School
- Shared Religious Site
- Jewish Settlement

Physical Closures

- Checkpoint
- Concrete Roadblock
- Iron Wall or Fence
- Road Gate
- ▲ Observation Tower
- Closed shops and Palestinian vehicular access is not allowed
- Palestinian vehicular access is not allowed
- Closed Areas for Palestinians

H1/H2 refers to the division of the city of Hebron into an area under the control of the PA (H1 - 60%) and another under the control of the IDF (H2 - 20%) following its withdrawal in 1997.

This update includes data up to April 2007. Access and closure data is collected by OCHA field staff and is subject to change. Access mapping is a work in progress. Maps will be updated regularly. Mapping by OCHA (2007) using satellite imagery and ground truthing. Base data and street data: OCHA, ICFP. For comments contact: ochaco@un.org or tel +972 (0)2 592 5962 URL: <http://www.ocha.org>

MAP IS PROVIDED FREE OF CHARGE NOT FOR SALE

