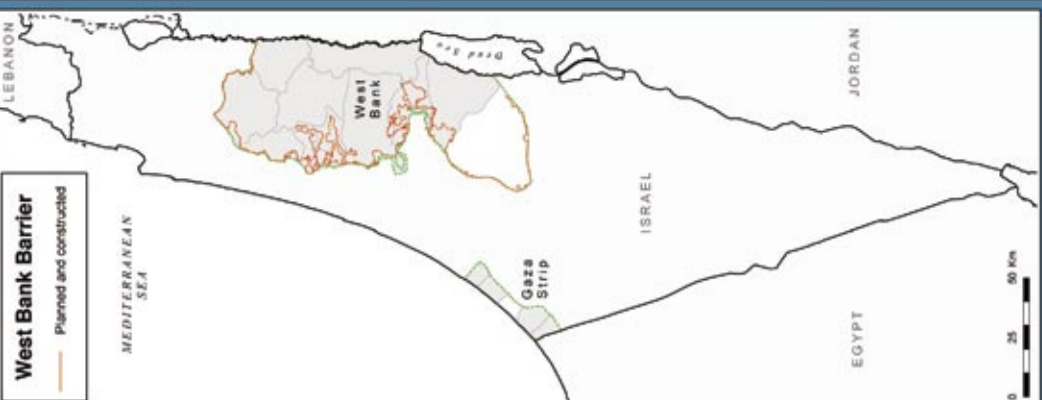
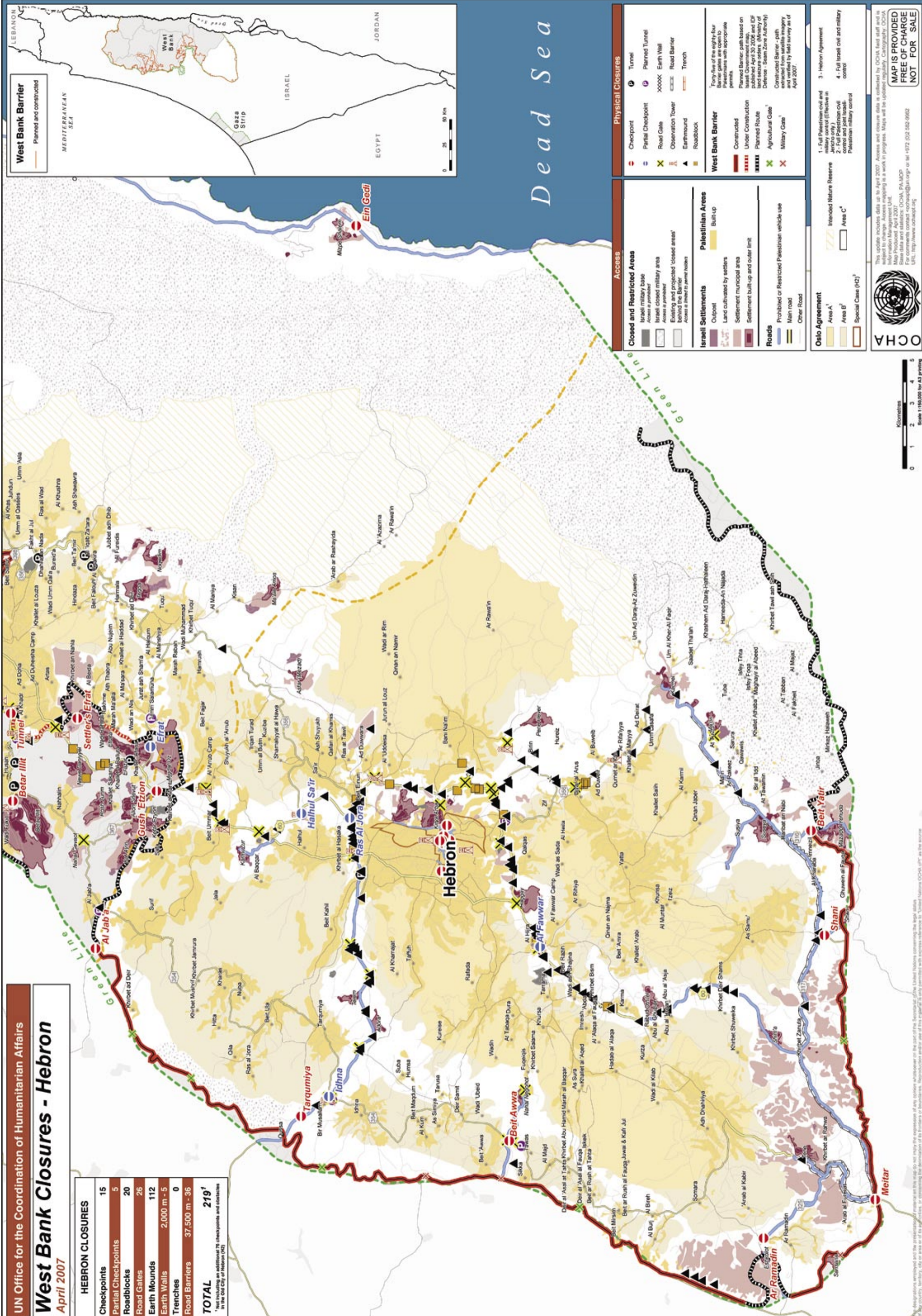


**UN Office for the Coordination of Humanitarian Affairs**  
**West Bank Closures - Hebron**  
**April 2007**

HEBRON CLOSURES	
Checkpoints	15
Partial Checkpoints	5
Roadblocks	20
Road Gates	26
Earth Mounds	112
Earth Walls	2,000 m - 5
Trenches	0
Road Barriers	37,500 m - 36
<b>TOTAL</b>	<b>219<sup>1</sup></b>

<sup>1</sup> Not including an additional 76 checkpoints and obstacles in the Old City of Hebron (OS).



Dead Sea

**Access**

**Closed and Restricted Areas**

- Israeli military base
- Access to perimeter
- Israeli closed military area
- Access to perimeter
- Existing and projected 'closed areas' behind the Barrier
- Access to Israel to permit visitors

**Israeli Settlements**

- Cupoil
- Land cultivated by settlers
- Settlement municipal area
- Settlement built-up and outer limit

**Roads**

- Prohibited or Restricted Palestinian vehicle use
- Main road
- Other Road

**Oslo Agreement**

- Area A
- Area B
- Special Case (H2)
- Intended Nature Reserve
- Area C

**Physical Closures**

- Checkpoint
- Partial Checkpoint
- Road Gate
- Observation Tower
- Earthmound
- Roadblock
- Tunnel
- Planned Tunnel
- Earth Wall
- Road Barrier
- Trench

**West Bank Barrier**

- Constructed
- Under Construction
- Planned Route
- Agricultural Gate
- Military Gate

**Notes:**  
 Topography of the eight-bar Barrier gates are consistent with Perimeter with appropriate permits.  
 Planned Barrier path based on Israeli Government map published April 30 2006 and IDF land secure orders (Ministry of Defense - Storm Zone Authority) extracted from satellite imagery and verified by field survey as of April 2007.



This update includes data up to April 2007. Access and closure data is collected by OCHA field staff and is subject to change. Access mapping is a work in progress. Maps will be updated regularly. Cartography: OCHA. Base data and statistics: OCHA, PA-MOP. For comments contact: ocha@un.org or +972 (0)2 252-5962. URL: http://www.ocha.net

**MAP IS PROVIDED FREE OF CHARGE NOT FOR SALE**

Scale 1:100,000 for A3 printing